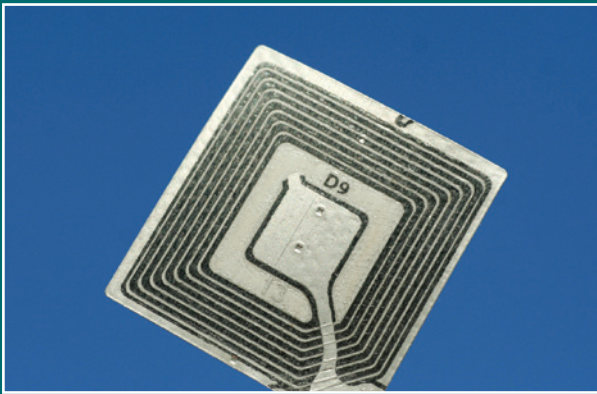


# Careers in Transportation



Growing fields with strong earning potential

## Nature of industry

The Transportation, Distribution and Logistics (TDL) sector includes industries providing transportation of passengers and cargo, warehousing and storage for goods, and support activities related to modes of transportation.

The modes of transportation are:

- Air
- Highway
- Rail
- Water

If you have ever checked out an advertisement, driven to the store, and bought a product at a low price, you can thank TDL workers for a job well done.

Transportation, Distribution and Logistics are all the activities that take place to get a product in your hands. TDL focuses on planning and forecasting, purchasing, product assembly, moving, storing, and keeping track of a product as it flows toward you and other consumers.

## DEGREES AND TRAINING OPTIONS

### SC4 certificate programs (college credit)

- **Radio Frequency Identification (RFID) Technology**  
Aligned to the Radio Frequency Identification + national certification
- **Transportation and Logistics Technology**  
Aligned to the Certified Logistics Associate (CLA) and Certified Logistics Technician (CLT) national certifications

### SC4 training programs (non-credit)

- **Supply Chain Technologies**  
Aligned to the following national certifications:
  - WorkKeys National Career Readiness (NCRC)
  - Certified Logistics Associate (CLA)
  - Certified Logistics Technician (CLT)
  - Internet and Computing Core (IC3)

# Transportation, distribution and logistics

## JOBS

With TDL, you have the opportunity to pursue hundreds of potential careers.

Your career path will be influenced by your skills, interests and personal decisions. It also will be affected by the size, type, geographic scope and organizational structure of the firm where you choose to work.

A broad base of business skills, knowledge of supply chain processes and relevant internship/work experience will give you ample opportunity to begin your career with a manufacturer, retailer, carrier, third party logistics firm or other organization. You likely will begin in an entry-level position.

As you demonstrate your capabilities, you can progress to TDL positions of greater responsibility.

One key to your success in this field is flexibility. You will work with people throughout your company – logistics, manufacturing and marketing. Depending on the size of your company, your initial responsibilities may deal with one or more TDL functions. Some positions will require you to specialize in a specific area such as material handling or radio frequency identification.

**The Transportation, Distribution and Logistics field offers numerous opportunities and careers, and St. Clair County Community College will guide you in developing the appropriate skills for success.**



### ACCREDITATION

SC4 is accredited by The Higher Learning Commission and is a member of the North Central Association of Colleges and Schools: [www.ncahigherlearningcommission.org](http://www.ncahigherlearningcommission.org) or (312) 263-0456.

### NON-DISCRIMINATION POLICY

SC4, an equal opportunity institution, is strongly and actively committed to increasing diversity within its community.

*This workforce solution was funded by a grant awarded under the President's Community-Based Job Training Grants as implemented by the U.S. Department of Labor's Employment and Training Administration. The solution was created by the grantee and does not necessarily reflect the official position of the U.S. Department of Labor. The Department of Labor makes no guarantees, warranties, or assurances of any kind, express or implied, with respect to such information, including any information on linked sites and including, but not limited to, accuracy of the information or its completeness, timeliness, usefulness, adequacy, continued availability, or ownership. This solution is copyrighted by the institution that created it. Internal use by an organization and/or personal use by an individual for non-commercial purposes is permissible. All other uses require the prior authorization of the copyright owner.*

## SALARY

The median annual wage of a shipping, receiving and traffic clerk in Michigan was \$30,700 in 2009.

The median annual wage of transportation, storage and distribution managers in Michigan was \$77,000 in 2009.

Source: [www.careeronestop.org](http://www.careeronestop.org)

## PUT YOURSELF IN DEMAND

Various careers are rated by O\*Net (The Occupational Information Network) as "Bright Outlook Occupations," meaning they are expected to grow rapidly in the next several years, will have large numbers of job openings, or are new and emerging occupations.

### Examples

**Supply Chain Technologies non-credit training** prepares you for an entry-level position as a shipping, receiving or traffic clerk (O\*Net code 43-5071) with an average hourly wage of \$14.74 or \$30,700 annually in Michigan.

#### Either certificate program:

**Transportation and Logistics Technology or Radio Frequency Identification Technology** prepares you for entry-level jobs such as shipping, receiving and traffic clerk (O\*Net code 43-5071) and cargo and freight agents (O\*Net code 43-5011.00) – both are currently designated as "Bright Outlook Occupations" by O\*Net.

### More credentials

**The RFID Technology certificate program** prepares students to sit for the CompTIA RFID+ Certification test.

**The Transportation and Logistics Technology certificate program** prepares students to sit for the Manufacturing Skill Standards Council's Certified Logistics Associate Certification test. Incumbent workers also may take the Certified Logistics Technician Certification test.

Both tests are available through SC4's Workforce Training Institute.

**For specific job demand and salary data, visit O\*Net at <http://online.onetcenter.org>.**

# Prepare to work in this dynamic career field

## SUPPLY CHAIN TECHNOLOGIES

Non-credit training  
class code: ZPTR-122



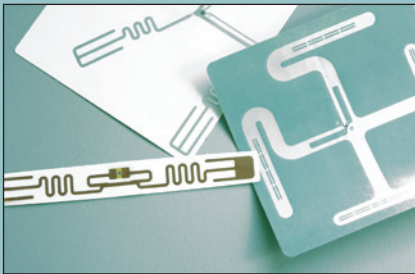
Completing this entry-level skills class will lead to employment in the transportation and logistics field as a shipping, receiving or traffic clerk. You will get 142 hours of training preparation broken into eight concentrated learning modules. Prerequisite: WorkKeys assessments.

- MODULE 1 – The Internet and Computing Core Certification (IC3)
- MODULE 2 – Introduction to Electrical/Electronic Concepts and Measurements
- MODULE 3 – Introduction to Radio Frequency Identification
- MODULE 4 – Introduction to Imports and Exports
- MODULE 5 – Introduction to Basic Calculating Skills Used in Technology
- MODULE 6 – Excel level 1, Access levels 1, 2, 3
- MODULE 7 – Certified Logistics Associate/Certified Logistics Technician
- MODULE 8 – Employability Skills

This training gives you a baseline background in transportation and logistics to help qualify for entry-level positions that involve RFID, transportation and logistics operations. It also prepares you to succeed in college credit certificate programs for RFID Technology and Transportation and Logistics Technology.

## RADIO FREQUENCY IDENTIFICATION TECHNOLOGY

Certificate program  
30 college credits

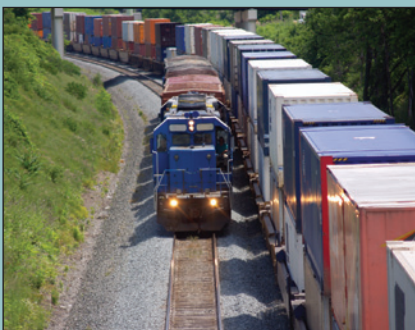


Prepare for employment in career fields related to Radio Frequency Identification Technology. The lab provides hands-on warehouse and storage/retrieval experience working with software, tags, readers, antennas and peripheral equipment. Learn to set up an RFID system, test and troubleshoot the system components, and modify the system. Students also will be able to communicate the business value of an RFID implementation.

CIS 115	Microcomputer Applications
ELT 130A	Fundamentals of Direct Current Electronics
ELT 130B	Fundamentals of Alternating Current Electronics
RFID 180	Radio Frequency ID Fundamentals
RFID 181	TagNet Middleware
CIS 120	Introduction to Networking
ELT 236	Microcontrollers: Energy Control Systems I
RFID 182	Technology Use in the Supply Chain
RFID 183	RFID Standards and Certification
RFID 150	RFID Internship

## TRANSPORTATION and LOGISTICS TECHNOLOGY

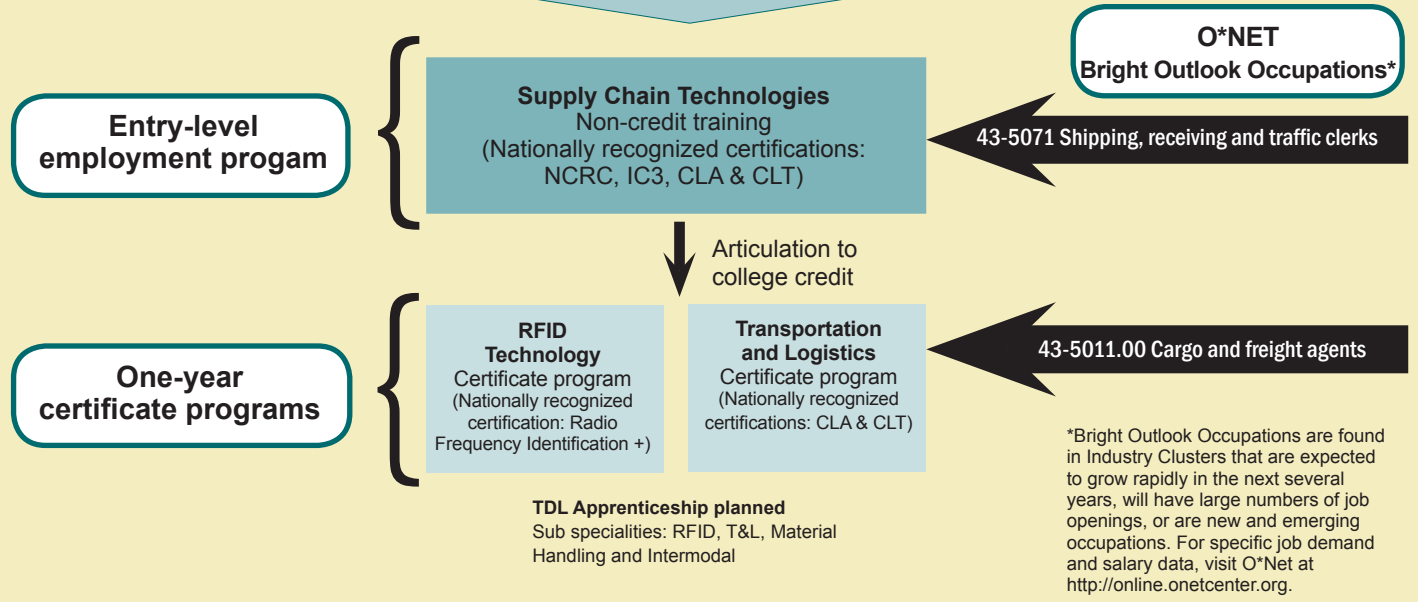
Certificate program  
30 college credits



Develop a working knowledge of the freight transportation industry. This includes supply chain management, domestic and international freight operations, import and export procedures, and documents and border security. Work experience and/or internship also are included. Completing this certificate is helpful for entry-level positions in the following fields: freight operations, logistics management, transportation management, supply chain operations and U.S. Customs.

CIS115	Microcomputer Applications
ENG 101	English Composition I
ITL 190	Introduction to Transportation and Logistics
MTH 110	Intermediate Algebra
RFID 180	Radio Frequency ID Fundamentals
ITL 191	Domestic and International Freight Operations
ITL 192	Import Procedures and Documents
ITL 193	Transportation and Border Security
ITL 194	Supply Chain Management
ITL 150	Transportation and Logistics Internship

## Career Pathway Transportation, Distribution and Logistics



### For more information about transportation programs:

[www.sc4.edu/transportation](http://www.sc4.edu/transportation)

Grant Project Manager Dennis Valade  
(810) 989-5743 or [dvalade@sc4.edu](mailto:dvalade@sc4.edu)

SC4 Engineering Technology Department  
(810) 989-5754

### SC4 support

- Personalized educational, career and employment planning
- Free lifetime employment service
- Vocational assessments
- Financial aid and scholarships
- On-site child care
- Flexible schedules: day, evening, online and short-term classes
- Free tutoring
- Modern labs and multimedia classrooms
- Full-service library

### More technology programs at SC4

#### Alternative energy

- Architectural design/green building
- Facility and energy management
- Renewable and alternative energy technology

#### Architectural design

CNC programmer/machinist  
Electronics and computer technology  
Electrical/industrial  
Engineering graphics  
Fabrication and design  
Machine tool  
Mechatronics  
Robotics/automation technology  
Technology – applied studies  
Welding and cutting technology

[www.sc4.edu](http://www.sc4.edu)

Make your move to a career in  
**TRANSPORTATION**

(810) 989-5500    (800) 553-2427  
[enrollment@sc4.edu](mailto:enrollment@sc4.edu)



May 2011



**St. Clair County  
Community College**

323 Erie St., P.O. Box 5015, Port Huron, MI 48061-5015